



COSMIC EQUIPMENTS (INDIA) PVT. LTD.

(ISO 9001 : 2015 Certified Company)

Unit III



COSMIC EQUIPMENTS (INDIA) PVT. LTD.

Cosmic Equipments (India) Pvt. Ltd. an ISO 9001:2015 certified company belongs to R.K. Group of companies. The group was found in the year of 1980. Cosmic Equipments (India) Pvt. Ltd is a manufacturer of vast array of Air Distribution products for HVAC systems, textile humidification and allied products.

Through continuous improvement and innovative, we started to Produce Insulated wall panels using two metal sheets with PPGI or SS304 as exterior sheets with PUF (Polyurethane Foam - Rigid) for industrial, commercial and agricultural buildings. Cosmic Equipments can able to fabricate and supply the flashings and fixing accessories along with wall panels. PVC covings for inner and corners are also available for hygiene and easy cleaning purpose. The metal cladding panels are thermal resistant, ability to withstand the most extreme temperature difference.

The Insulated wall panels can be used to the key segments such as Steel, Power, Automobiles, IT, Pharma, Oil & Gas, Infrastructure Sectors, etc. Also the traditional Cold storage sectors & Modern Cold chain demands including Fruits, Vegetables, Dairy & Allied Products, Meat & Poultry, Sea Food, Food Processing, Beverages, Cold logistics, etc.,

Material : Galvanized Steel / Stainless Steel / Plywood & Gypsum Board on request.
Coating : RMP / SMP Coating.
Type : Cold Store / Clean Room / Partition etc.
Sheet Thick : 0.40mm to 0.75mm
Colours : Off White and Other Colours upon request.

PRODUCT RANGE

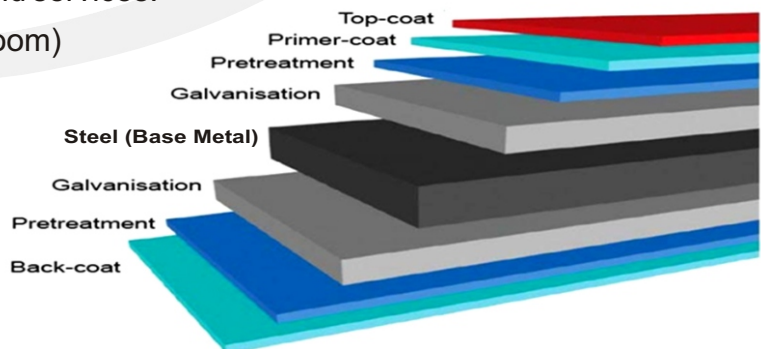
Cosmic offers the following range of products and services.

Insulated Wall Panels (Cold Store and Clean Room)

Insulated Wall Panels (Partition & Ripening)

Flashings and Accessories

Engineering and Design



TECHNICAL DATA

- Mechanical Characteristic of the Foam at overall density of $40(+/-2) \text{ kg/m}^3$
Tensile Strength : 140-250kpa Compression Strength : 100-210kpa
Shear Strength : 100-240kpa Fire Property : B3 as per DIN 4102
- Insulation Capacity
K value (Thermal conductivity of PU) : -0.019 W/mK Tolerance : +/-0.002
- Water absorption of the foam after 24 Hours : 1.0% of Volume
- Closed cells : 93%
- Metal Facing : Prepainted GI Coils (275GSM) Aluzinc (Az150)
- Metal Finish : Metal Top Side can be either mill finish or prepainted polyester coating.

VARIOUS USE OF COSMIC EQUIPMENTS COLD ROOMS



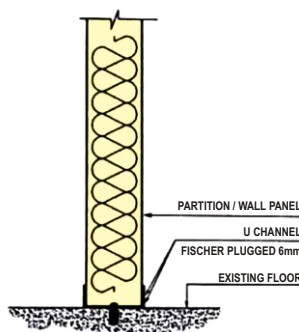
INSULATIONS :

As per green building norms, Cosmic Equipments ensures that the foaming agents are environmental friendly and CFC free. Cosmic Equipments uses polyurethane as foaming agent which does not absorb smells. The panels are neither toxic nor irritating and it will not allow developing any kind of fungi. These products are classified as B3 according to European fire retardant standard.

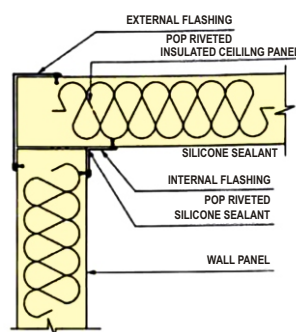
THICKNESS AND DIMENSION

Insulated panels are available in 40, 50, 60, 80, 100, 120 & 150mm thick and density will be 40 - 42 kg/m³. The panels can be produced according to customer required lengths.

LIST OF FLASHINGS FOR WALL PANELS - COLD STORE

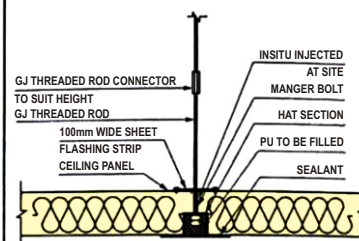


Wall Fixing detail for Dry Store

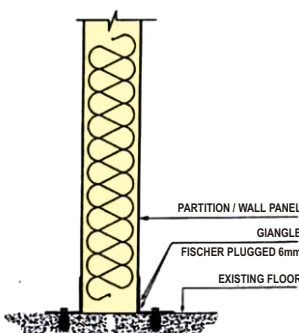


Ceiling / Wall Joint Detail

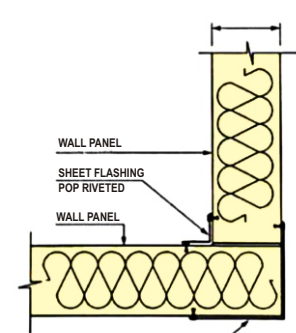
PANELS ABOVE 6 MTS. LENGTH



Ceiling Suspension with Hat Section

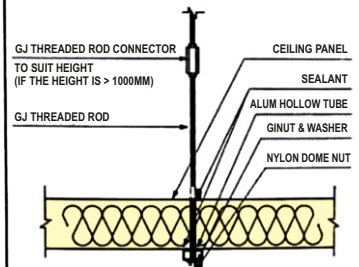


Wall Fixing detail for Dry Store



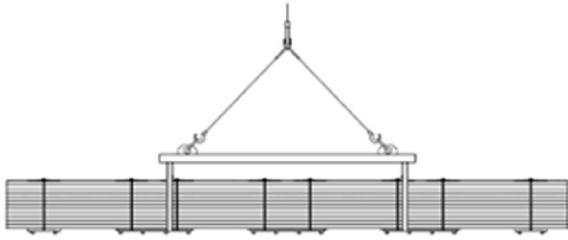
Wall Fixing detail for Dry Store

PANELS BELOW 6 MTS. LENGTH

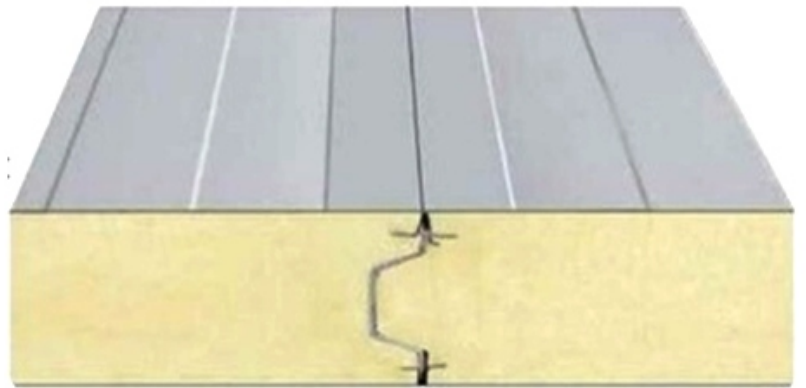
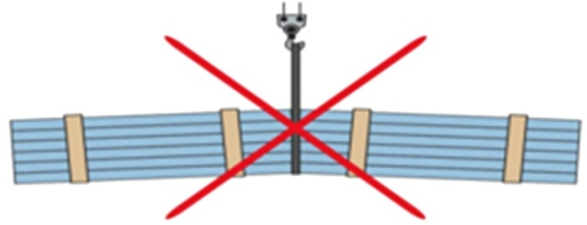


Ceiling Suspension with Hollow Tube

CORRECT METHOD OF HANDLING



WRONG METHOD OF HANDLING



WE SAVE ENERGY FOR YOU...

COSMIC EQUIPMENTS (INDIA) PVT. LTD.

(ISO 9001 : 2015 Certified Company)

Head Office

No.9-A, Kalaivani Street Extn., Keelkattalai, Chennai - 600 117.

Phone: +91 44 2247 6014, 22471066, 22477014,

Unit III Factory at :

No. 169, Tambaram Somangalam Main Road, Varadharajapuram, Tambaram
Chennai - 600 044.

E-mail : unitiii@cosmicin.com, Website : www.cosmicpuff.com